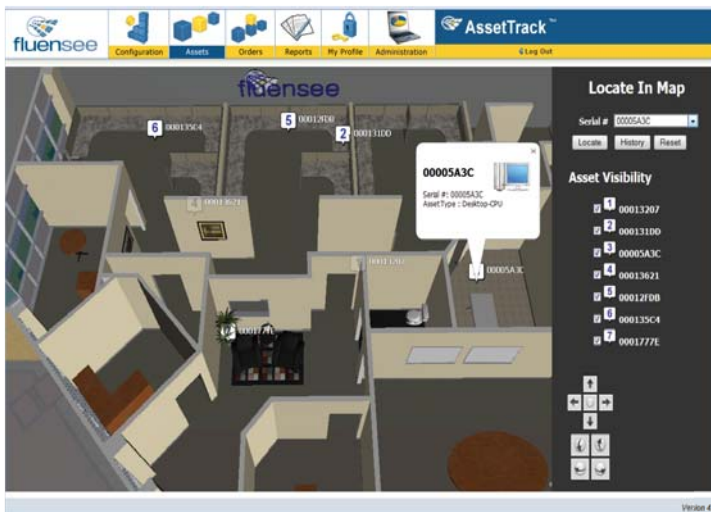


AssetTrack™

**Quick, Easy and Accurate
Asset Tracking Using
Advanced Technologies**



Automated Tracking, Comprehensive Management

Fluensee's AssetTrack™ is an asset tracking and management turnkey solution that includes Fluensee's AssetTrack software and/or middleware, tracking technology such as RFID from best-in-class hardware partners, Fluensee's implementation services and long-term support. The solution was designed to provide real-time visibility and control of all high-value and/or mission-critical assets to help increase asset and labor optimization in many different industries including:

- Manufacturing
- IT / Business Services
- Government
- Food & Beverage
- Oil, Gas, Energy, Mining
- Corporate Retail
- Healthcare
- Hospitality
- Education
- Agriculture / Horticulture
- Trucking / Logistics
- AND MORE

A Universal Solution for All Requirements

AssetTrack was designed to be very flexible and configurable so that even if projects' hardware requirements differ, your software does not. Not only does this give our solutions the ability to be configured differently for various customers, it also lets an individual organization utilize it for many different assets, projects, divisions, etc.

Fluensee provides tracking and management systems for a variety of industries with these common use cases.

-  **IT / Electronics** - manages asset inventory, owner, location, lifecycle and more
-  **Returnable Transport Items** - tracks asset location, inventory, cycle times, contents, age, condition
-  **Towels & Linens** - tracks launderable asset stock, age, # of washes, location, laundry time
-  **In-Transit Equipment** - manages assets on the move in service vehicles, providing vehicle inventory, location, route stops
-  **Manufacturing Assets** - tracks valuable equipment's location, status, workflow, maintenance / repair records and more



Mobile Management

Whether you're doing in-the-field tracking, performing regular asset inventories, or simply need a means to manage assets without an extensive fixed tracking infrastructure, Fluensee's mobile solution, MxTrack™, provides a way to track assets *anytime, anywhere*. The solution gives users the flexibility to connect to a wireless network or run in batch mode, and



compliments AssetTrack by providing search functions, inventory management capabilities, record updates, and other features that allow users to have a tracking system wherever they need.

Asset Tracking Your Way

Configure fields, attributes, locations and more to match the specific information you need to manage.

Integrate into any existing application or platform to pass valuable information to and from AssetTrack and get even more value out of your system.

Attach asset records as needed, whether tracking a container and its contents, two parts of a whole, etc.

Select between multiple hosting options such as a cloud-based (SaaS) solution or a corporate-hosted solution on your own IT infrastructure.

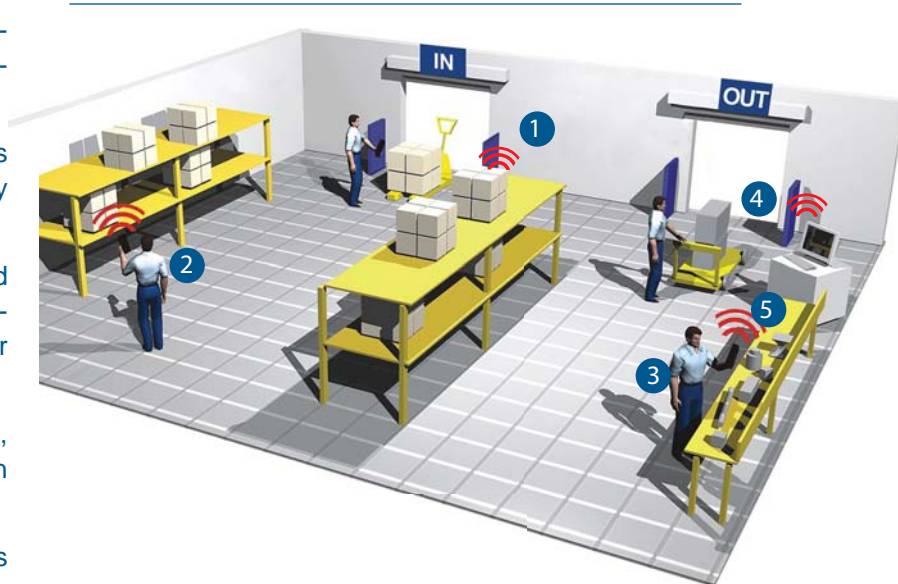
Customize the implementation support needed. No IT personnel available; no problem. Facilities people busy; fine with us. We'll streamline your implementation to be as hands-on or -off as needed.

Configure workflows, alerts, reports, etc. so that the right people have the right information at the right time.

Utilize any tracking technology available - from barcode to RFID to temperature sensors - with Fluensee's hardware-agnostic capabilities.

Real-Time Asset Management

- 1 **Location / Movement Tracking:** Provides map-based or text details on asset location and movement history.
- 2 **Mobile Inventory Tracking:** Uses handheld readers to quickly take or update inventory and reconcile any discrepancies.
- 3 **Automatic Updating:** Uses handheld devices, fixed read points, or computer workstations to modify asset information, change status, upload images or make updates.
- 4 **Check-In/Out:** Assigns a temporary asset location, owner, project, etc., creating a check-in/out situation that can be used to generate alerts and reports.
- 5 **Configurable Management Tools:** Allows admins to set up location hierarchies, add users / employees, configure alert notifications based on specific events, build reports using any and all asset attributes and more.



AssetTrack's flexibility also allows it to be integrated with or provide RFID capabilities to other systems, and be deployed through multiple hosting options.



Evanhoe & Associates, Inc.
5089 Norman Blvd.
Dayton, OH 45431

Tel: (937) 235-8692
contact.us@evanhoe.com
www.evanhoe.com